



# CANYON EAST CORPORATE PARK



**17520 / 17317 64TH AVENUE EAST, PUYALLUP, WA**

## **CHELAN BUILDING**

- 98,070 Square Feet
- 20 dock high doors, 2 grade level doors
- 75+ auto parking stalls
- 30' clear height
- 6" reinforced slab
- LED Warehouse lighting
- Fencing potential

## **COLUMBIA BUILDING**

- 229,493 Square Feet
- 51 dock high doors, 2 grade level doors
- 150+ auto parking stalls
- 32' clear height
- 6" reinforced slab
- LED Warehouse lighting
- 95+ trailer parking stalls

### **THAD MALLORY, SIOR**

425.362.1410  
thad.mallory@nrmk.com

### **TAYLOR HOFF, SIOR**

425.362.1388  
taylor.hoff@nrmk.com

### **CAM WARREN**

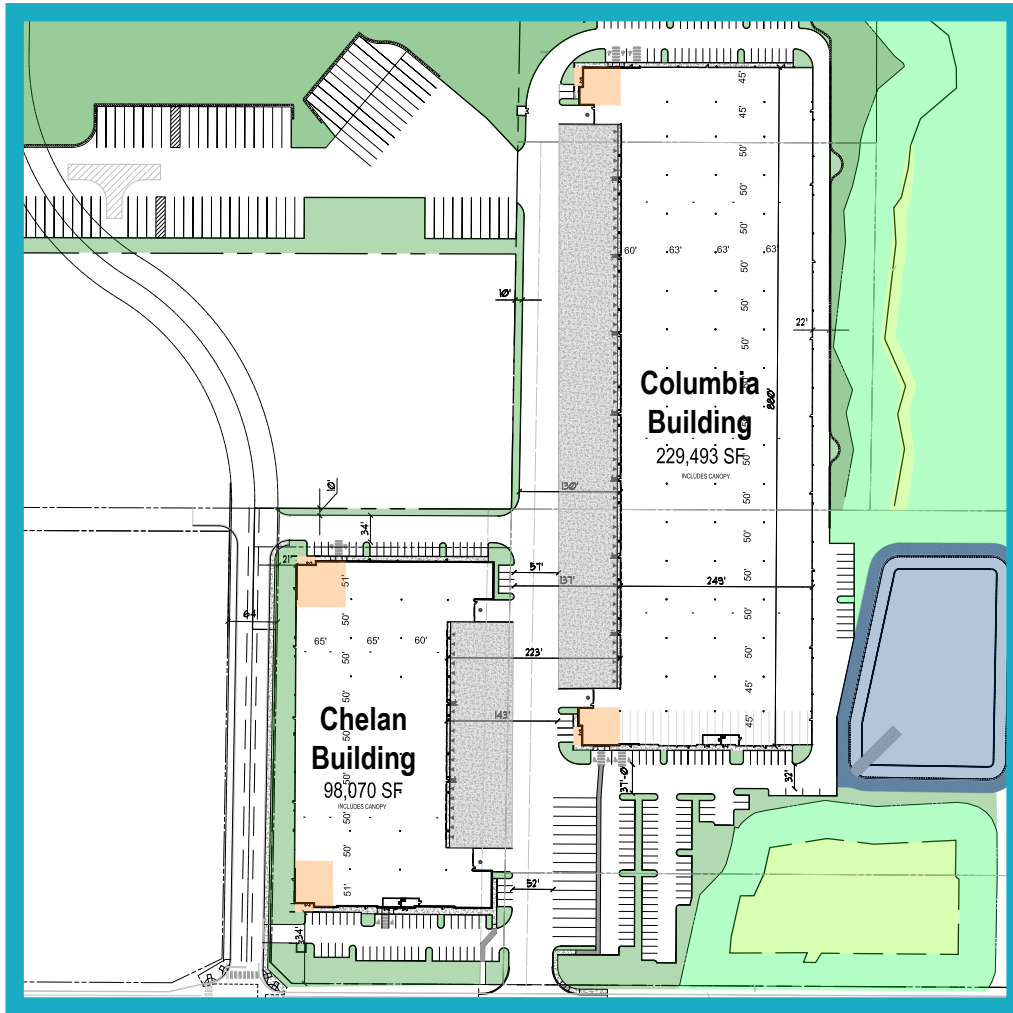
425.362.1395  
cam.warren@nrmk.com

### **MORGAN RICHEY**

425.362.1409  
morgan.richey@nrmk.com

**NEWMARK**

**VECTOR**  
DEVELOPMENT COMPANY



**ESTIMATED DELIVERY Q3 2022**

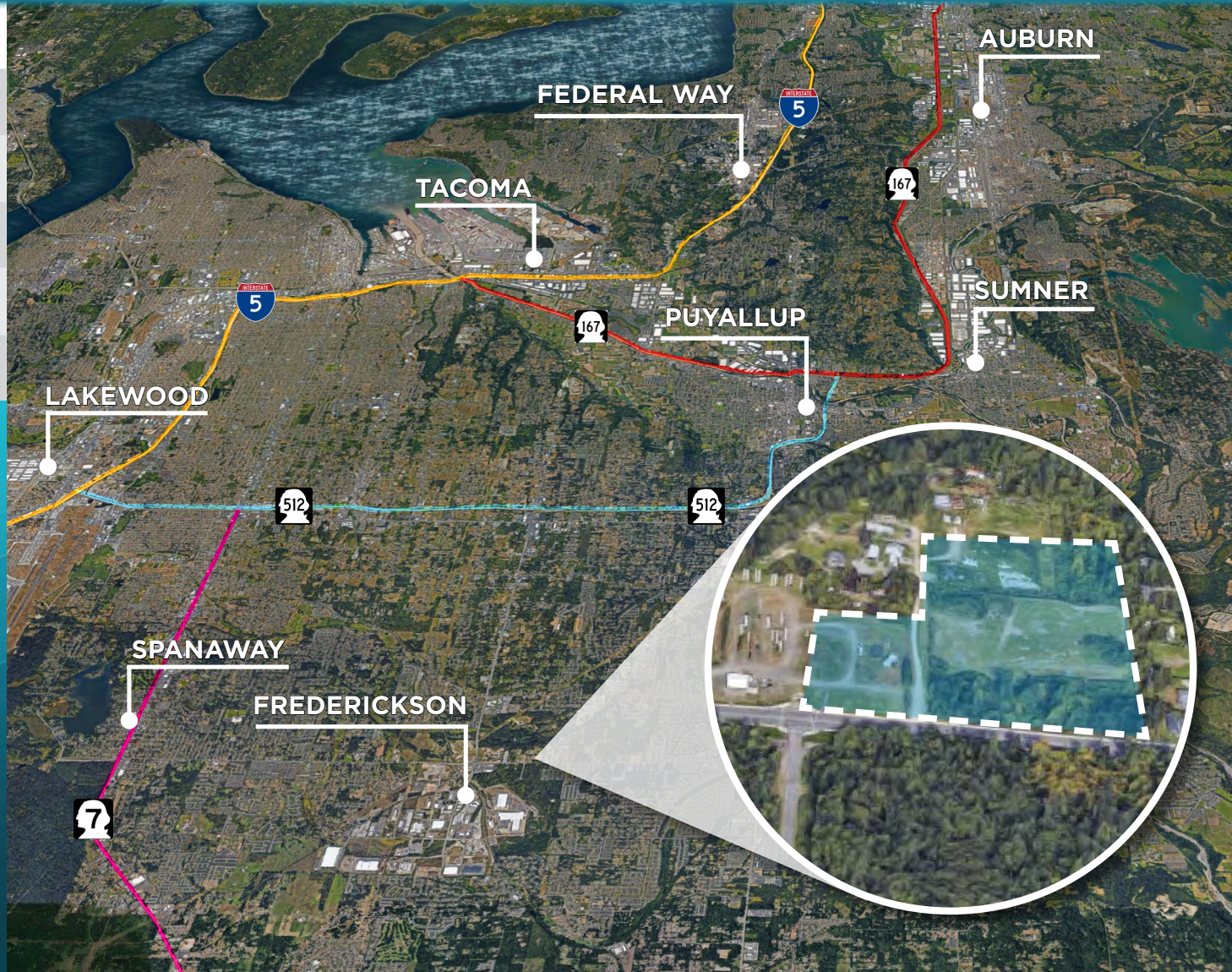




**APPROXIMATE DRIVE TIMES**

SUMNER IND. DISTRICT	15 MINUTES
TACOMA	20 MINUTES
OLYMPIA	40 MINUTES
SEATAC INT'L AIRPORT	40 MINUTES
SEATTLE	60 MINUTES

- Only project in Frederickson within walking distance to numerous amenities
- Easy access with signalized intersection
- Convenient access to SR-161 and Hwy-167
- Amenities within 1/2 mile:



**THAD MALLORY, SIOR**

425.362.1410

thad.mallory@nmrk.com

**TAYLOR HOFF, SIOR**

425.362.1388

taylor.hoff@nmrk.com

**CAM WARREN**

425.362.1395

cam.warren@nmrk.com

**MORGAN RICHEY**

425.362.1409

morgan.richey@nmrk.com

The distributor of this communication is performing acts for which a real estate license is required. The information contained herein has been obtained from sources deemed reliable but has not been verified and no guarantee, warranty or representation, either express or implied, is made with respect to such information. Terms of sale or lease and availability are subject to change or withdrawal without notice.